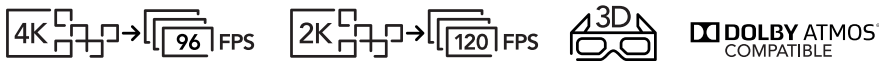


CINELIFE+ IMB

Content management and storage | Alternative content | Post production

Fully-integrated media block with a simplified interface for CineLife+ projectors for content playback, scheduling, and management



Simplified playback, scheduling, and management of cinema content with advanced processing capabilities and a wide range of I/Os.

Seamless CineLife+™ integration passes projector HDMI audio to the IMB-S4 for audio processing.

Key features:

- › **Affordable 4K HFR** – Cost effective solution for playing the latest studio blockbusters at the intended frame rates
- › **Easy to install** – Pre-configured out of the box for plug-and-play setup
- › **Easy to operate** – UX-designed web interface for IMB and projector that delivers a tightly integrated experience
- › **Dedicated support** – Projection system backed by a single technical support team
- › **Ready to play** – Secure system for DCP playback of feature content, advertising, and alternative content
- › **Built-in storage** – 2TB or 4TB of solid state on-board storage
- › **Long shelf life** – Over 10 years of continuous security monitoring without power
- › **Dual projector sync** – Perfect synchronization for large format applications



Specifications

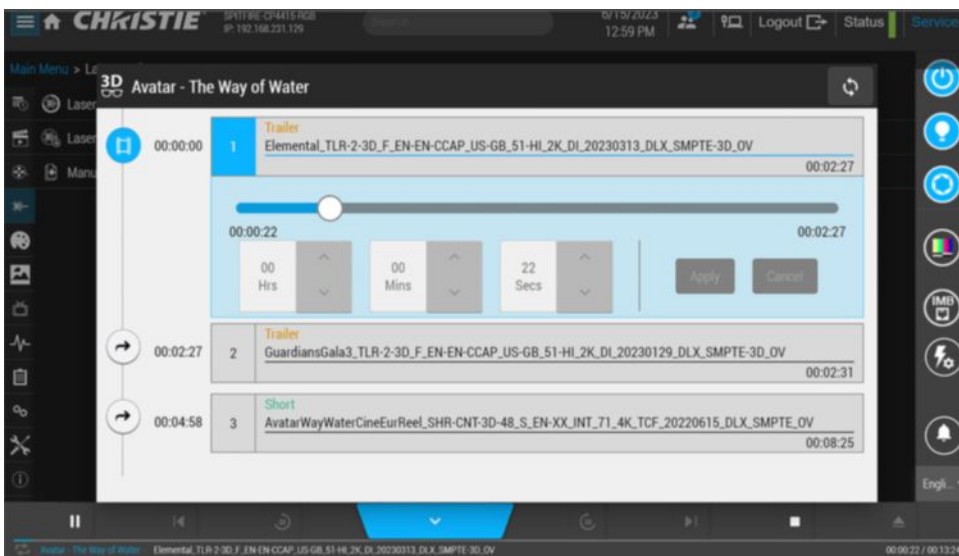
IMB-S4

System interfaces	<ul style="list-style-type: none"> • 1 x Gigabit Ethernet - (1GbE/RJ-45) • 2 x 2.5 Gigabit Ethernet - (2.5GbE/ RJ-45) for dedicated high speed ingest / streaming media and optional NAS • 1 x USB 3.0 (Type A female - 4.8Gbits/s) • 3 x BNC (Sync In, Sync Out, LTC Out)
Audio output	<ul style="list-style-type: none"> • 16/24-bit AES3 16-channel, 48 kHz (2 x RJ-45) • AUX audio¹
Storage	<ul style="list-style-type: none"> • 3 x 1TB or 3 x 2TB Solid State Drive (SSD) in RAID 5 configuration² • Supports optional external NAS-S4 for additional storage
DCP playback	<ul style="list-style-type: none"> • DCI-compliant • JPEG 2000 • 2K - 24, 25, 30, 48, 50, 60, 120 fps (2D) • 2K - 24, 25, 30, 48, 50, 60 fps (3D) • 4K - 24, 25, 30, 48, 60, 96 fps (2D) • 4K - 24, 25, 30, 48 fps (3D) • MPEG-2 (Interop DCP) • SMPTE Digital Cinema Package (DCP), Interop DCP
Control	<ul style="list-style-type: none"> • UX-designed SMS integration with projector web interface • VNC remote access • Theatre Management System integration with major TMS suppliers

1. The auxiliary audio port is compatible with AES67 and SMPTE ST 2098-1 Immersive Audio Metadata, ST 2098-2 Immersive Audio Bitstream, and ST 2098-5 D-Cinema Immersive Audio Channels and Sound field groups (e.g. Dolby Atmos, Auro, DTS-X).

2. 1.8 TB or 3.6 TB useable storage 2TB version is upgradeable to 4TB.

Intuitive, tightly-integrated IMB-S4 web user interface for CineLife+ projectors



Corporate offices

Christie Digital Systems USA, Inc.
Cypress
PH: +1 714-236-8610

Christie Digital Systems Canada
Inc.
Kitchener
PH: +1 519-744-8005

Worldwide offices

Australia
PH: +61 (0) 7 3624 4888

Brazil
PH: +55 11 3181-2952

China (Beijing)
PH: +86 10 6561 0240

China (Shanghai)
PH: +86 21 6030 0500

China (Shenzhen)
PH: + 86 755 3680 7000

Colombia
PH: +57 (315) 652-9620

Germany
PH: +49 221 99 512-0

India
PH: +91 (080) 6708 9999

Mexico
PH: +52 (55) 4744-1791

Singapore
PH: +65 6877 8737

South Korea
PH: +82 2 702 1601

Spain
PH: +34 (0) 91 633 99 90

United Arab Emirates
PH: +971 (0) 4 503 6800

United Kingdom
PH: +44 (0) 118 977 8000

United States (Arizona)
PH: +1 602-943-5700

United States (Texas)
PH: +1 469-757-4420

For the most current specification information, please visit christiedigital.com

Copyright 2024 Christie Digital Systems USA, Inc. All rights reserved. Our centers of excellence for manufacturing in Kitchener, Ontario, Canada and in Shenzhen, China are ISO 9001:2015 Quality Management System-certified. All brand names and product names are trademarks, registered trademarks or tradenames of their respective holders. "Christie" is a trademark of Christie Digital Systems USA, Inc., registered in the United States of America and certain other countries. DLP® and the DLP logo are registered trademarks of Texas Instruments. Performance specifications are typical. Due to constant research, specifications are subject to change without notice.
CD4901-IMB-S4-datasheet-update-Aug-24-EN

